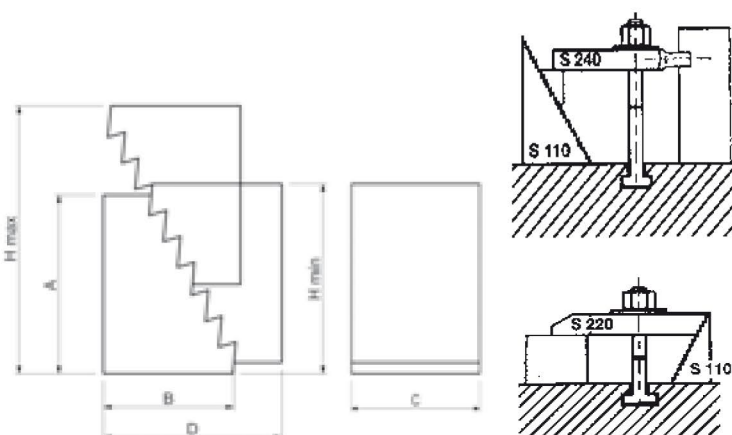
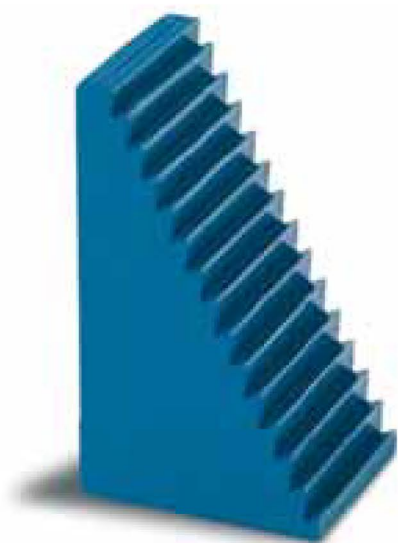


S110

NR. 6500E

APPOGGI DENTATI
TOOTHED SUPPORTS



Materiale: Acciaio da bonifica verniciato
Altezza gradino:
verticale 4,65 mm - orizzontale 2,3 mm.

Material: Hardening painted steel
Height of tooth:
vertical 4,65 mm - horizontal 2,3 mm.

Code	A	B	C	D	H _{min}	H _{max}	 gr
S110.00001	31,5	22	30	38	31,5	53	90
S110.00002	64,5	36,5	30	70	64,5	105	300
S110.00003	128	68	30	132	128	208	1050

Si eseguono su richiesta misure non a catalogo / Other sizes can be supplied on request.

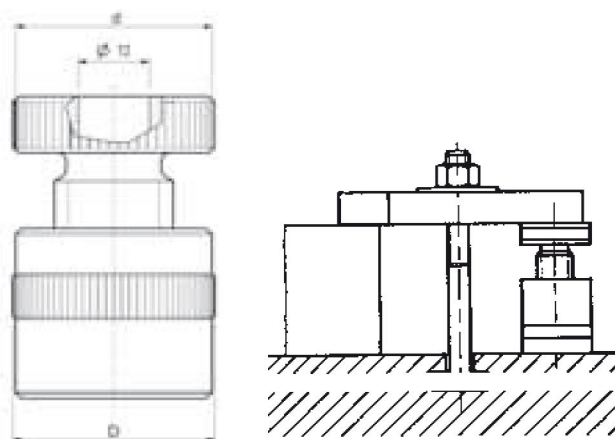
S120

NR. 6400

APPOGGI A VITE
SCREW SUPPORTS



N.B: S120.00050 senza foro



Materiale: Acciaio da bonifica verniciato.

Material: Hardening painted steel.

Code	H _{min}	H _{max}	d	D	F _{max} kN	gr	Passo
S120.00050	40	50	34	34	20	190	M20
S120.00070	54	70	50	50	60	620	M30
S120.00100	73	100	50	50	60	900	M30
S120.00140	100	140	65	70	105	2600	Q40x6
S120.00210	140	210	70	80	180	4900	Q50x6
S120.00300	190	300	80	100	360	10500	Q65x6

Si eseguono su richiesta misure non a catalogo / Other sizes can be supplied on request.